



47th

**BEST MASTER
IN MANAGEMENT
IN THE WORLD**

FINANCIAL TIMES - 2024

INTERNATIONAL ENTRANCE EXAM

**GRANDE ECOLE
PROGRAMME**

2025-2026

MASTER EN MANAGEMENT

MBS is accredited:



ENSEIGNEMENT
SUPÉRIEUR PRIVÉ
D'INTÉRÊT GÉNÉRAL
LOI DU 22.07.2013



MAKING A DIFFERENCE

Founded in 1897, MBS offers French and international talents, unique in their diversity and backgrounds, the world-class education of a prestigious French Grande École of Management.

PREPARE
TO CHANGE
THE
FUTURE

EDUCATING TO TRANSFORM THE FUTURE

MBS prepares future committed leaders for a responsible world, driven by an ethic of holistic performance, aware of the social, societal, and environmental impacts of their decisions on the world.

COMMITTED TO CHANGING THE WORLD IN A POSITIVE WAY

- ETHICS
- OPENNESS AND DIVERSITY
- CORPORATE SOCIAL RESPONSIBILITY AND PERFORMANCE



UNE EXCELLENCE ACADÉMIQUE INTERNATIONALEMENT RECONNUE



5%
of Business
Schools
worldwide



2%
of Master and
Executive MBA
Programmes



1%
of Business
Schools
worldwide



MBS has been awarded the "Bienvenue en France" label, created by Campus France to guarantee the quality of the welcome given to international students

A COMPLETE RANGE OF MANAGEMENT PROGRAMMES

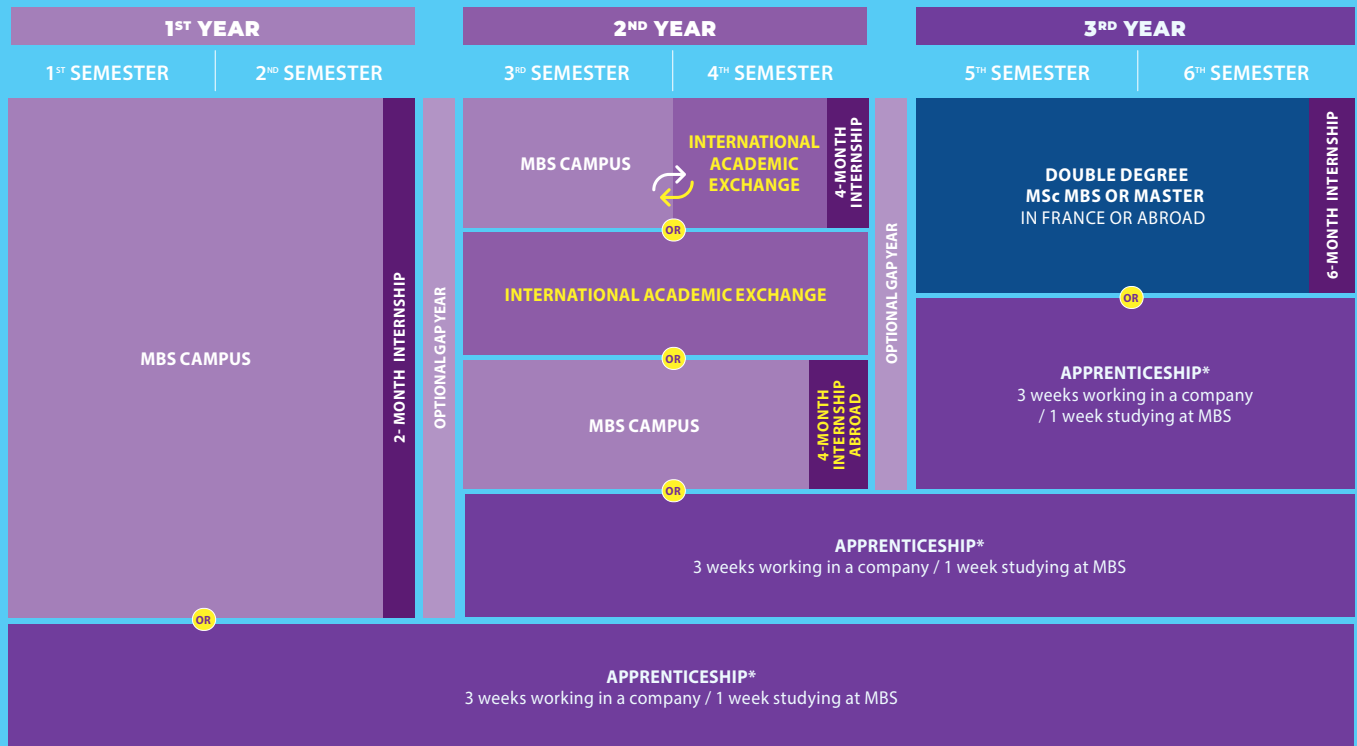
PROGRAMMES THAT COMBINE
INTERACTIVE COURSES, PROFESSIONAL
PROJECTS AND EXPERIENCES.

- Bachelor of International Business Administration
- Master in Management (Grande École Programme)
- Masters of Science
- Executive MBA
- Executive Education
- Digital Executive MBA
- DBA (Doctorate of Business Administration)
- Summer School

MASTER IN MANAGEMENT (GRANDE ECOLE PROGRAMME)

BUILD YOUR OWN PATH

IN TWO LANGUAGES (FRENCH/ENGLISH) OR 100% ENGLISH



*For the apprenticeship track, starting from the 2nd year, the international academic exchange, gap year, and internship will not be available. Eligibility is subject to the regulations of the French Ministry of Labour. A C1 level of French is required.

1ST YEAR EXAMPLE OF COURSES**

- Sustainable project management
- Corporate finance
- Corporate social responsibility
- Marketing mix
- Accounting
- Entrepreneurship, innovation & society
- Statistics & market survey
- ...

2ND YEAR EXAMPLE OF COURSES**

- Strategic management
- Management control
- Information system governance
- Strategic marketing
- Purchase & supply chain management
- ...

AND...

COURSES TO CHOOSE IN EACH OF THE 2 FOLLOWING FIELDS:

- Organisation & Transition
- Change & transformation management

APPRENTICESHIP AVAILABLE AT MBS*

Apprenticeship is available at MBS, accessible from the first year of the Programme Grande Ecole - Master in Management.

It offers the opportunity to gain professional experience before graduating.

Each student is provided with personalized guidance from the MBS' Career Center to build their professional project.

3RD YEAR APPRENTICESHIP TRACK

Students opting for the apprenticeship track will have to choose a specialisation enabling them to develop their reflective skills in a specific area.

- Specialisation in Entrepreneurship & Innovation
- Specialisation in Strategy & Consulting
- Specialisation in Project Management
- Specialisation in Marketing & Strategic Vision
- Specialisation in Digital Marketing
- Specialisation in Sales & Business Development
- Specialisation Human Resources & Responsible Leadership
- Specialisation in Audit & Control
- Specialisation in Finance
- Specialisation in Purchasing & Supply Chain

3RD YEAR DOUBLE DEGREE TRACK

DOUBLE DEGREES WITH MBS' MASTERS OF SCIENCE

- MSc Digital Marketing & Omnichannel Strategy
- MSc Luxury Marketing in a Sustainable World
- MSc Big Data & Artificial Intelligence for Business
- MSc Digital Transformation & Business Consulting
- MSc Entrepreneurship & Innovative Business Models
- MSc Global Finance
- MSc International Business
- MSc Complex Project Management
- MSc Supply Chain Management
- MSc Marketing & Business Development (apprenticeship)

FRENCH DOUBLE DEGREES IN PARTNERSHIP WITH MONTPELLIER MANAGEMENT UNIVERSITY

+15 specialisations

- Master in Management Control and Decision-making Information Systems
- Master in Accounting, Control, Audit
- Master in Information Systems
- ...

INTERNATIONAL DOUBLE DEGREES

- More than 10 Master double degrees with international partner universities

BUILD A CAREER THAT SUITS YOU

MBS ENTREPRENEURSHIP CENTER START-UP SPIRIT

Develop your entrepreneurial culture through the MBS Entrepreneurship Center. As a **responsible start-up incubator**, it supports project leaders, students and MBS Alumni, from the idea to financing, at local, national and international level.

- 28 Expert coaches
- 275+ supported projects*
- 150 companies created*
- 50+ workshops and bootcamps each year

* Over the past 3 years

CAREER CENTER

MBS has one of the biggest Career Centers in France to ensure students' employability. More than 20 career consultants support you at every stage of your professionalisation, from self-assessment to finding internships or jobs.

5000+ PARTNER COMPANIES

Each year, our partners forge **special relationships with MBS** by selecting students for internships or sandwich courses and recruiting graduates from the school.

AND
50 MAJOR PARTNERSHIPS
including:



A NETWORK OF 23,000 ALUMNI

The Alumni association gathers **23,000 graduates and more than 30 branches worldwide**.

As an MBS student, you are free lifetime members of MBS Alumni. You have exclusive access to the best job offers in the network, as well as advice and coaching to help you prepare for professional interviews.



AFTER THE MASTER IN MANAGEMENT

87%
GRADUATE
EMPLOYMENT
RATE
WITHIN 2 MONTHS*

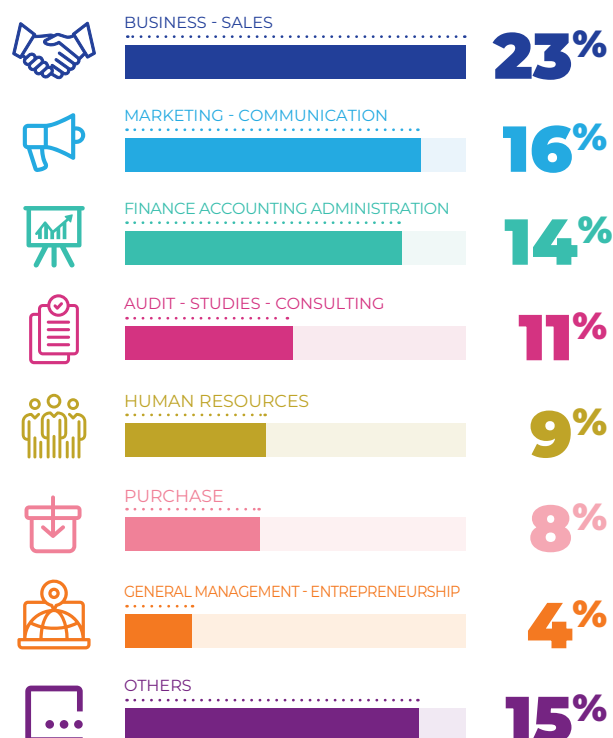
6%
START THEIR
**OWN
BUSINESS***

ONCE GRADUATED FROM MBS AND THROUGHOUT YOUR CAREER, YOU WILL ACCESS TO A WIDE RANGE OF FUNCTIONS IN OF SECTORS OF ACTIVITY.

SOME OF THE COMPANIES THAT RECRUIT OUR GRADUATES:

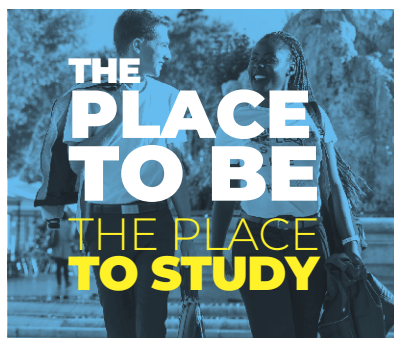
LVMH / BNP PARIBAS / KPMG / L'ORÉAL / DÉCATHLON / CARREFOUR / BOUYGUES TÉLÉCOM / SOCIÉTÉ GÉNÉRALE / VOLKSWAGEN / ORANGE / EDF / CGM / ...

INTEGRATION INTO THE WORLD OF WORK*



* CCE 2024 survey

MONTPELLIER & MBS



1ST
BEST STUDENT
CITY
IN FRANCE
L'ÉTUDIANT 2024

**IDEALLY
LOCATED :**

10KM FROM THE SEA

2 HOURS
FROM THE FIRST
SKI RESORT

3 HOURS
FROM PARIS
& BARCELONA



100+
PERMANENT
FACULTY
WITH 65%+
INTERNATIONAL
TEACHERS

6
RESEARCH
CHAIRS

23,000+
ALUMNI AROUND
THE WORLD
IN OVER
100 COUNTRIES

Since
1897
3,700+
STUDENTS



* Source : CCE 2024

47th
BEST MASTER
IN MANAGEMENT
IN THE WORLD
FINANCIAL TIMES - 2024

15th
BEST MANAGEMENT
SCHOOL
IN THE WORLD
FOR CSR TEACHING
FINANCIAL TIMES - 2024

20th
BUSINESS
SCHOOL
IN THE WORLD
FOR RESEARCH
US NEWS- 2024

A 3-STEP ADMISSION PROCESS

1

CHECK THAT YOU MEET ENTRY REQUIREMENTS

The International Entrance Exam is aimed at applicants holding a 2-year degree after high school (enrolment in the 1st year of the programme) or a 3 or 4-year degree after high school (enrolment in the 2nd year of the programme).

By joining the Master in Management (Grande Ecole Programme), you will be able to graduate with a Master's degree endorsed and recognised by the French State, with the triple accreditation AACSB, EQUIS and AMBA.

2

COMPLETE THE ONLINE APPLICATION...

- <https://bit.ly/MBS-Application-PGE> (Application fees: 90€)

... AND UPLOAD THE FOLLOWING DOCUMENTS & TEST RESULTS:

- CV
- Photo
- Copy of your ID or passport
- Copy of the latest degree certificate and academic transcripts of the last 3 years of studies
- French test : TCF, DELF or DALF
Applies to students wishing to follow the bilingual track and whose mother tongue is not French. Minimum level required : B2
- English test: MBS iCIMS/Easyspeaking (free) or official English test
- Logic and reasoning test :
TOIEC, TAGE MAGE, GRE, GMAT or MBS logic & reasoning test (free)



3

SELECTED CANDIDATES WILL BE SCHEDULED FOR AN ADMISSION INTERVIEW VIA PRE-RECORDED VIDEO.

PLEASE CONTACT US FOR ASSISTANCE IN PREPARING FOR THE TESTS.

TUITION FEES 2025-2026 ACADEMIC YEAR

1 ST YEAR	2 ND YEAR	3 RD YEAR
€ 14,500	€ 15,300	€ 15,300

- **INDIVIDUAL SCHOLARSHIP UP TO €2,000**
according to admission results
- Payment by installments available



COST OF LIVING IN MONTPELLIER 30 TO 40% LESS EXPENSIVE THAN PARIS

- Accommodation: € 500 to € 600 /month
- Miscellaneous expenses: minimum € 350 /month



INTERNATIONAL STUDENT SUPPORT

- Digital Welcome Desk: a dedicated online portal for international students
- Support to find accommodation (necessary to obtain a visa)
- Support to apply for a French visa
- Airport or train station pick-up
- Assistance with administrative procedures (opening a bank account, telephone subscription, insurance, French social security enrolment, etc.)
- Early kick-off to integrate international students

Non contractual document.
This document was created for informative purposes.
Tracks, prices and conditions may be subject to change.

Updated: September 2024 / info@mbs-education.com - sPhotos: Gilles Lefrang - AdobeStock - Printed on recycled paper

CONTACT US: ADMISSIONS TEAM

Africa, Europe & Middle-East

☎ +33 (0) 6 10 67 08 75

India ☎ +91 7506359983

Asia, Americas & Oceania

☎ +33 (0) 6 47 75 14 42

China ☎ 15712961500

apply2master@mbs-education.com

mbs-education.com

MBS

2300 avenue des Moulins
34185 Montpellier Cedex 4
FRANCE

