



5TH
BEST BACHELOR
IN FRANCE
 LE FIGARO ÉTUDIANT
 PALMARES - 2024

INTERNATIONAL ENTRANCE EXAM

PROGRAMME BACHELOR 2025-2026
 OF INTERNATIONAL
 BUSINESS ADMINISTRATION

MBS is accredited:



ENSEIGNEMENT
 SUPÉRIEUR PRIVÉ
 D'INTÉRÊT GÉNÉRAL
 LOI DU 22.07.2013



MAKING A DIFFERENCE

Founded in 1897, MBS offers French and international talents, unique in their diversity and backgrounds, the world-class education of a prestigious French Grande École of Management.

PREPARE
TO CHANGE
THE
FUTURE

EDUCATING TO TRANSFORM THE FUTURE

MBS prepares future committed leaders for a responsible world, driven by an ethic of holistic performance, aware of the social, societal, and environmental impacts of their decisions on the world.

COMMITTED TO CHANGING THE WORLD IN A POSITIVE WAY

- ETHICS
- OPENNESS AND DIVERSITY
- CORPORATE SOCIAL RESPONSIBILITY AND PERFORMANCE



INTERNATIONALLY RECOGNISED ACADEMIC EXCELLENCE



5%
of Business
Schools
worldwide



2%
of Master and
Executive MBA
Programmes



1%
of Business
Schools
worldwide



MBS has been awarded the "Bienvenue en France" label, created by Campus France to guarantee the quality of the welcome given to international students

A COMPLETE RANGE OF MANAGEMENT PROGRAMMES

PROGRAMMES THAT COMBINE
INTERACTIVE COURSES, PROFESSIONAL
PROJECTS AND EXPERIENCES.

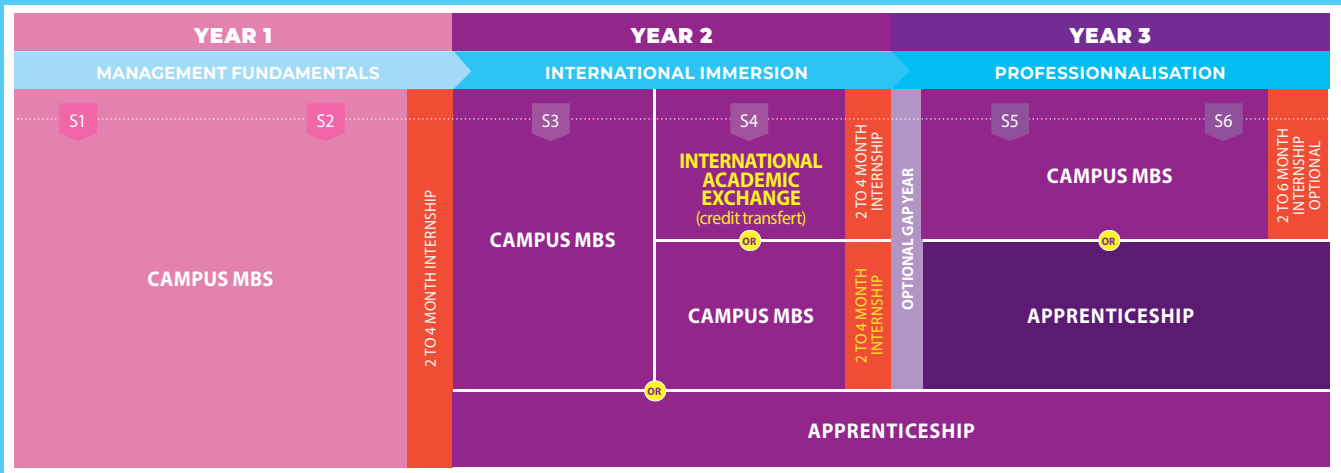
- Bachelor of International Business Administration
- Master en Management (Grande Ecole Programme)
- Masters of Science
- Executive MBA
- Executive Education
- Digital Executive MBA
- DBA (Doctorate of Business Administration)
- Summer School

3 POSSIBLE TRACKS, CHOOSE YOURS

1 ■ BUSINESS PRO TRACK

With the Business Pro track, combine the international dimension with a strengthened professionalisation

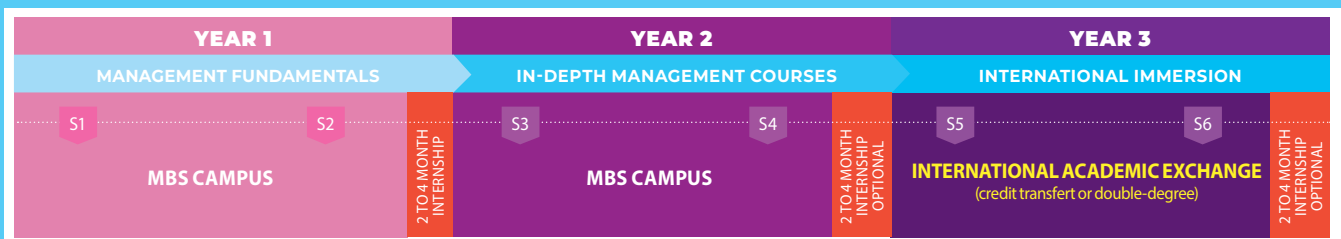
Taught in bi-lingual or in English / 6-month professional experience / Apprenticeship possible during Year 2 and Year 3



2 ■ INTERNATIONAL TRACK

With the International track, experience a 12-month international immersion and come out with a double-degree

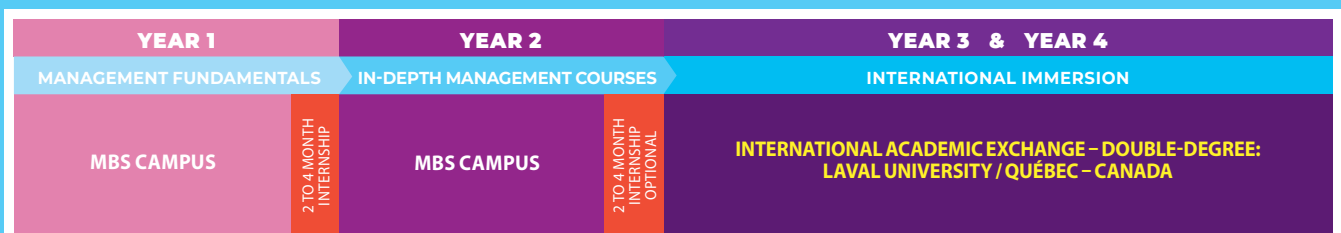
Taught in bi-lingual or in English / 12-month professional experience / Double-degree



4 ■ NORTH AMERICA TRACK

With the North America track, join a 4-year track and graduate with a double-degree from one of the most prestigious university in Canada

4-year track / 24 month in Canada within a prestigious university / Double-degree



BUILD A CAREER THAT SUITS YOU

MBS ENTREPRENEURSHIP CENTER START-UP SPIRIT

Develop your entrepreneurial culture through the MBS Entrepreneurship Center. As a **responsible start-up incubator**, it supports project leaders, students and MBS Alumni, from the idea to financing, at local, national and international level.

- 28 Expert coaches
- 275+ supported projects*
- 150 companies created*
- 50+ workshops and bootcamps each year

* Over the past 3 years

CAREER CENTER

MBS has one of the biggest Career Centers in France to ensure students' employability. More than 20 career consultants support you at every stage of your professionalisation, from self-assessment to finding internships or jobs.

91% of our students in Bachelor programmes get a job within one year of graduating.

5000+ PARTNER COMPANIES

Each year, our partners forge **special relationships with MBS** by selecting students for internships or sandwich courses and recruiting graduates from the school.

AND 50 MAJOR COMPANIES

including:



A NETWORK OF 23,000 ALUMNI

The Alumni association gathers **23,000 graduates and more than 30 branches worldwide.**

As an MBS student, you are free lifetime members of MBS Alumni. You have exclusive access to the best job offers in the network, as well as advice and coaching to help you prepare for professional interviews.



AFTER THE BACHELOR PROGRAMME

AT THE END OF YOUR FINAL YEAR, YOU'LL HAVE A PROFESSIONALLY-ORIENTED, ACCREDITED AND GRADED DIPLOMA.

YOU THEN HAVE THE CHOICE OF FINDING A JOB OR PURSUING YOUR STUDIES AT MASTER'S LEVEL.

FURTHER STUDIES*

After the Bachelor's degree, 70% of students decide to continue their studies as part of a university Master's degree, a Grande Ecole programme or a Master of Science in a Business School.

PURSUING A BAC+5 AT MBS

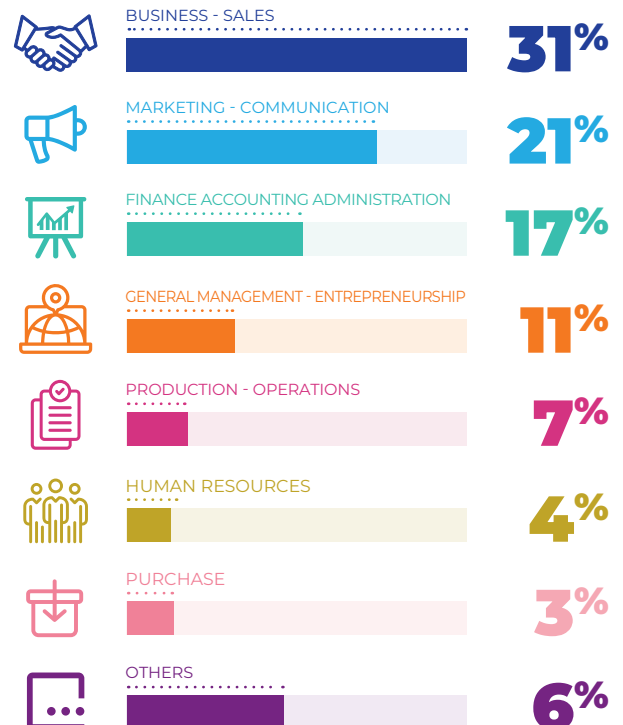
Once you have graduated from the Bachelor's programme, there are several opportunities to continue your studies at the school:

- Apply to the **Grande École Programme** (Master in Management)
- Apply to one of our **Masters of Science programmes**

INTEGRATION INTO THE WORLD OF WORK*

SOME OF THE COMPANIES THAT RECRUIT OUR GRADUATES:

LVMH / BNP PARIBAS / KPMG / L'ORÉAL / DÉCATHLON / CARREFOUR / BOUYGUES TÉLÉCOM / SOCIÉTÉ GÉNÉRALE / VOLKSWAGEN / ORANGE / EDF / CGM / ...



MONTPELLIER & MBS



1ST
L'ETUDIANT 2024
BEST STUDENT CITY
IN FRANCE

IDEALLY LOCATED :

10KM FROM SEA

2 HOURS
FROM THE FIRST
SKI RESORT

3 HOURS
FROM PARIS
& BARCELONA



100+
PERMANENT
FACULTY
WITH **65%+**
INTERNATIONAL
TEACHERS

6
RESEARCH
CHAIRS

23,000+
ALUMNI AROUND
THE WORLD
IN OVER
100 COUNTRIES

Since
1897
3,700+
STUDENTS



* Source: CCE 2024 survey

5th
BEST
BUSINESS
SCHOOL
BACHELOR
IN FRANCE

LE FIGARO ETUDIANT - 2024

2nd
BEST
BUSINESS
SCHOOL
FOR ECOLOGICAL
TRANSITION

LE POINT - 2024

20th
BUSINESS
SCHOOL
IN THE
WORLD
FOR RESEARCH

US NEWS - 2024

A 3-STEP ADMISSION PROCESS

1

CHECK THAT YOU MEET ENTRY REQUIREMENTS

International Admissions are open to candidates, without distinction of nationality, who previously studied in a non French institution. Enrolment after high school or after one or two years in a university programme.

2

COMPLETE THE ONLINE APPLICATION...

■ <http://bit.ly/international-entrance-BIBA> (Application fees: 90€)

... AND UPLOAD THE FOLLOWING DOCUMENTS & TEST RESULTS:

- CV
- Photo
- Copy of your ID or passport
- Copy of the latest degree certificate and academic transcripts of the last 3 years of studies
- **Logic and reasoning test:**
1st & 2nd years: TAGE Post-Bac or MBS logic & reasoning test (free)
3rd year: TAGE 2 or GRE or GMAT or MBS logic & reasoning test (free)
- **French test:**
TCF, DELF or DALF.
Applies to students wishing to follow the French track and whose mother tongue is not French. Minimum required : B2 Level
- **English test MBS iCIMS/Easyspeaking (free)** or external English test.
Minimum required : 700 TOEIC or equivalent



MORE INFORMATION
ON LEVEL REQUIRED ON
MBS-EDUCATION.COM

3

SELECTED CANDIDATES WILL BE SCHEDULED FOR AN ADMISSION INTERVIEW VIA PRE-RECORDED VIDEO.

PLEASE CONTACT US FOR ASSISTANCE IN PREPARING FOR THE TESTS.

TUITION FEES

2025-2026 ACADEMIC YEAR

	1 st YEAR	2 nd YEAR	3 rd YEAR	4 th YEAR
BUSINESS PRO TRACK	€9,950	€9,950 or €0 if Apprenticeship track ⁽¹⁾	€9,950 or €0 if Apprenticeship track ⁽¹⁾	-
INTERNATIONAL TRACK	€9,950	€9,950	€13,000	-
NORTH AMERICA TRACK	€9,950	€9,950	€13,000	€13,000

- **INDIVIDUAL SCHOLARSHIPS UP TO €2,000** according to admission results
- Payment by installments available

MORE INFORMATION



⁽¹⁾ When opting for the apprenticeship track, you do not pay tuition fees.



**COST OF LIVING IN MONTPELLIER
30 TO 40% LESS EXPENSIVE
THAN PARIS**

- Accommodation: € 500 to € 600 /month
- Miscellaneous expenses: minimum € 350 /month



**INTERNATIONAL
STUDENT SUPPORT**

- Digital Welcome Desk: a dedicated online portal for international students
- Support to find accommodation (necessary to obtain a visa)
- Support to apply for a French visa
- Airport or train station pick-up
- Assistance with administrative procedures (opening a bank account, telephone subscription, insurance, French social security enrolment, etc.)
- Early kick-off to integrate international students

Non contractual document.
This document was created for informative purposes.
Tracks, prices and conditions may be subject to change.

Updated: September 2024 / photo: LigneBlanc.net - Photos: Gilles Lehmann - AdobeStock - Printed on recycled paper

**CONTACT US:
ADMISSIONS
TEAM**

Africa, Europe & Middle-East

☎ +33 (0) 6 10 67 08 75

India ☎ +91 7506359983

Asia, Americas & Oceania

☎ +33 (0) 6 47 75 14 42

China ☎ 15712961500

apply2bachelor@mbs-education.com

mbs-education.com

MBS

2300 avenue des Moulins
34185 Montpellier Cedex 4
FRANCE

